

Welcome to the AccessibilityOnline Webinar Series



A collaborative program between the ADA National Network and the U.S. Access Board

The Session is Scheduled to begin at 2:30pm Eastern Time
We will be testing sound quality periodically

Audio and Visual are provided through the on-line webinar system. This session is closed captioned. Individuals may also listen via telephone by dialing 1-712-432-3100 code 930098 (This is **not** a Toll Free number)

The content and materials of this training are property of the US Access Board and the Great Lakes ADA Center and cannot be used and/or distributed without permission. This program is funded through a contract agreement with the U.S. Access Board. For permission to use training content or obtain copies of materials used as part of this program please contact us by email at adata@adagreatlakes.org or toll free (877)232-1990 (V/TTY)

www.AccessibilityOnline.org

1



Listening to the Webinar



- ▶ The audio for today's webinar is being broadcast through your computer. Please make sure your speakers are turned on or your headphones are plugged in.
- ▶ You can control the audio broadcast via the Audio & Video panel. You can adjust the sound by "sliding" the sound bar left or right.
- ▶ If you are having sound quality problems check your audio controls by going through the Audio Wizard which is accessed by selecting the microphone icon on the Audio & Video panel



2



Listening to the Webinar, *continued*



If you do not have sound capabilities on your computer or prefer to listen by phone, dial:

1-712-432-3100

Pass Code:
930098

This is **not** a Toll Free number

3

Listening to the Webinar, *continued*



MOBILE Users (iPhone, iPad, or Android device and Kindle Fire HD)

Individuals may listen** to the session using the Blackboard Collaborate Mobile App (Available Free from the Apple Store, Google Play or Amazon)




**Closed Captioning is not visible via the Mobile App and limited accessibility for screen reader/Voiceover users

4

Captioning



- ▶ Real-time captioning is provided during this webinar.
- ▶ The caption screen can be accessed by choosing the  icon in the Audio & Video panel. ↓
- ▶ Once selected you will have the option to resize the captioning window, change the font size and save the transcript.



5

Submitting Questions



- ▶ You may type and submit questions in the Chat Area Text Box or press Control-M and enter text in the Chat Area
- ▶ If you are connected via a mobile device you may submit questions in the chat area within the App
- ▶ If you are listening by phone and not logged in to the webinar, you may ask questions by emailing them to webinars@accessibilityonline.org



Please note: This webinar is being recorded and can be accessed on the AccessibilityOnline website at www.accessibilityonline.org/Archives within 24 hours after the conclusion of the session.

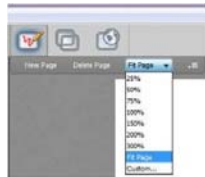
6



Customize Your View



- ▶ Resize the Whiteboard where the Presentation slides are shown to make it smaller or larger by choosing from the drop down menu located above and to the left of the whiteboard. The default is “fit page”




7



Customize Your View *continued*



- ▶ Resize/Reposition the Chat, Participant and Audio & Video panels by “detaching” and using your mouse to reposition or “stretch/shrink”. Each panel may be detached using the  icon in the upper right corner of each panel.

8

Setting Preferences

- ▶ Depending on your system settings you may receive visual and audible notifications when individuals enter/leave the webinar room or when other actions are taken by participants. This can be distracting.
- ▶ To turn off notifications (audible/visual)
 - Select “Edit” from the tool bar at the top of your screen
 - From the drop down menu select “Preferences”
 - Scroll down to “General”
 - select “Audible Notifications” Uncheck anything you don’t want to receive and “apply”
 - Select “Visual Notifications” Uncheck anything you don’t want to receive and “apply”
 - For Screen Reader User – Set preferences through the setting options within the Activity Window (Ctrl+slash opens the activity window)

9



Technical Assistance



- ▶ If you experience any technical difficulties during the webinar:
 1. Send a private chat message to the host by double clicking "Great Lakes ADA" in the participant list. A tab titled "Great Lakes ADA" will appear in the chat panel. Type your comment in the text box and "enter" (Keyboard - F6, Arrow up or down to locate "Great Lakes ADA" and select to send a message); or
 2. Email webinars@accessibilityonline.org ; or
 3. Call 877-232-1990 (V/TTY)

10

Open Question and Answer Session

11

Presenters



Melissa Anderson



Tim Creagan



Marsha Mazz



Rex Pace

12

Session Agenda

- Response to previously submitted questions
- Open Q & A

13

Topics

- Public Rights of Way
- Transportation
- Tolerances
- Accessible Routes/Parking
- Plumbing Elements and Features
- Signage
- Assistive Listening Systems
- Residential/Transient Lodging
- ABA Compliance
- Historic preservation
- Section 508

14

Public Rights of Way

15

Rulemaking Update

- Next Steps –
 - Final Board approval
 - Submit to Office of Management and Budget for review
- Publish Final Rule – 2014?
- Adoption by DOJ and DOT



16

PAR vs. SUP vs. Trails



Pedestrian Access Route
Pedestrians only



Trail
Pedestrian
(Recreation)



Shared Use Path
Pedestrians and Bikes
(Recreation & Transportation)

17

Accessible Trail Surfaces



Loose surface materials:

- Generally need special treatment (e.g., binders, consolidants, compaction, and grid forms)
- Frequent maintenance

NCA's website - <http://www.ncaonline.org/>

18

Pedestrian Access Route Intersections



Transition point with accessible route from a building - 2% max. cross slope on each



19

Pedestrian Access Route



Minimum clear width – Standards vs. PROWAG vs. Local Policy



20

Developments and Private Streets



- Privately owned with public utility and emergency access easements
- Requirements for slope of pedestrian access routes
- If not covered, what is required?

21

Alterations and Project Scope Restriping of Crosswalks



What's required??

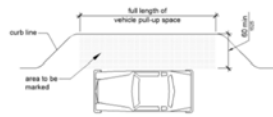


22

On-street Parking/Access Aisles



Access Aisle outside the Vehicular Way



23

Bus Stops and Shelters

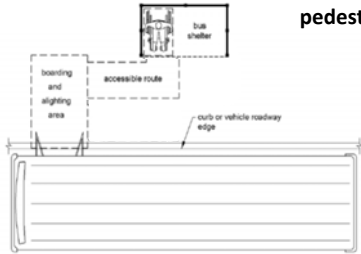
- Wheelchair clear space – 30" x 48" min. at one end of a seat or not overlapping the area 18 inches from the front edge of the seat



24

Transit Connections

- Accessible route connections to shelter
- Connection to other pedestrian facilities



25

Transportation

26

Zoo/Park Trains



Transportation Facility?
Transportation Vehicle?
Accessibility required?

27

Tolerances

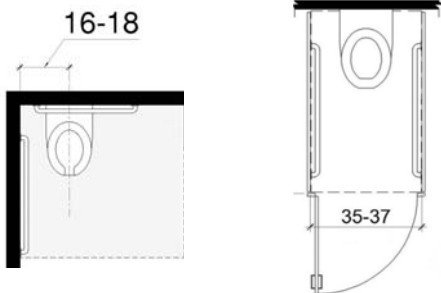
28

Dimensional Tolerances (104.1.1)

“All dimensions are subject to conventional industry tolerances except where the requirement is stated as a range with specific minimum and maximum end points.”

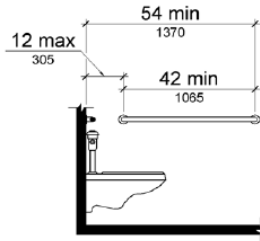
29

Dimensions with “Specific” Ranges No Tolerance



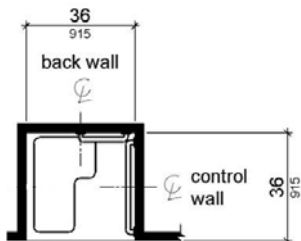
30

Dimensions without "Specified" End Points



31

Absolute Dimensions Tolerance Applies

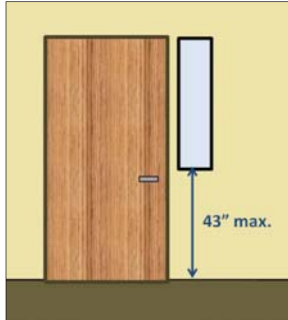


32

Accessible Routes/Parking

33

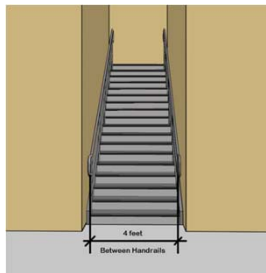
Vision Lights (404.2.11)



If provided, vision lights: 43" max. AFF (not required if bottom edge is above 66")

34

Stair Handrails



- Stairs at areas of refuge must be 48" wide – measured between handrails (IBC 1007.3)
- Other stairs sized according to occupant load but not less than 44" (IBC 1005.3.1 and 1009.4)

35

U.S. General Services Administration Automatic Doors

§ 3.14 Facilities Standards for the Public Buildings Service

- All public entrances provided in accordance with Paragraph F206.4.1 (Public Entrances) of the ABAAS must have at least one entrance door complying with Section 404.3 (Automatic and Power-Assisted Doors and Gates).
- Where a public entrance has a vestibule with exterior and interior entrance doors, at least one exterior door and at least one interior door must comply with Section 404.3.

36

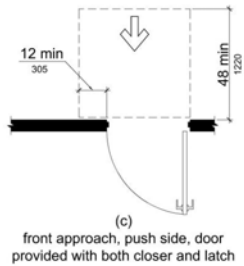
Janitor's Closets



- Employee work area
- < 1,000 sf – approach, enter, and exit (203.9)
 - 1,000 sf or larger – common use circulation path (206.2.8)

37

Doors with Panic Hardware



38

Dumpsters



- Employee work area
- Approach, enter, and exit (§ 203.9)
- Associated with ADA or ABA covered dwelling units
- Accessible entry and controls (§ 203.8)

39

Lawn Seating



- Temporary, not fixed
- § 221 Assembly areas is the safest guide
 - § 221.5 requires an accessible route to lawn seating areas
 - Program access (title II) and barrier removal (title III)

40

Plumbing Elements and Features

41

Drinking Fountains (211)

Where provided at exterior site or floor, 2 units required (wheelchair & standing access)

- alternative: single "hi-lo" unit
- multiple installations: 50% of each type



42

Drinking Fountains & Bottle Fillers



combination of one fountain and bottle filler not "hi-low"



operable parts (205) - reach over obstruction considerations

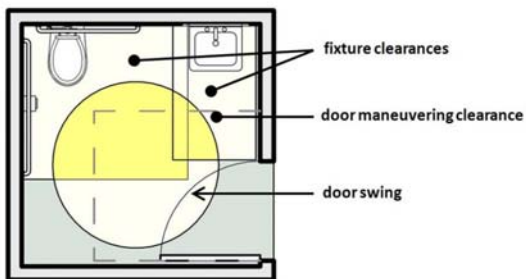
43

Overlap: Clear Floor Space and Accessible Route



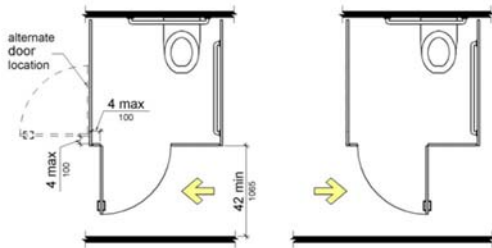
44

Overlap: Between Clear Floor Spaces



45

Toilet Stall Doors (604.8)

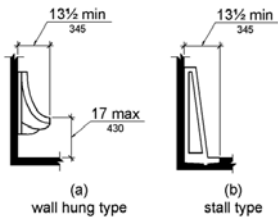


Location and Door Swing

46

Urinals (605)

17" max. height, elongated rim
"elongated" = 13 1/2" min.

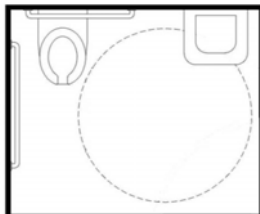


47

Toilet Compartment (604.8)

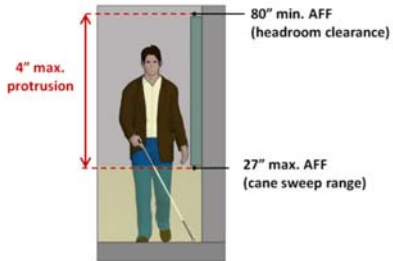
Stalls with more than 1 plumbing fixture
(includes a urinal) treated as toilet room

Second accessible
lavatory
required outside
stall (213.3.4)



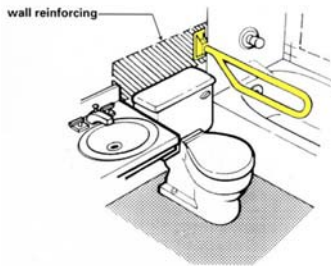
48

Protruding Objects in Toilet Rooms



49

Grab Bars (609)



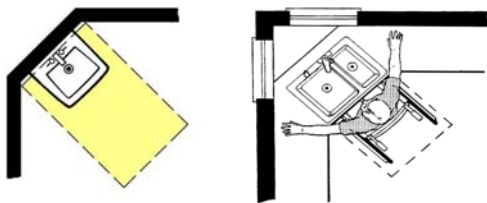
fold-down grab bar in home modification not covered by Standards



wall-mounted bar supports use and point loads

50

Corner Lavatories and Sinks (305 & 306)



clear floor space and knee and toe clearance provisions must be met

51

Sinks (606.2 Exceptions)

Parallel approach permitted to a sink when:

cook top or conventional range is not provided and to wet bars

sinks used primarily by children 5 years and younger

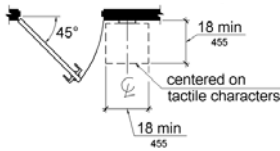


52

Signage

53

Sign Placement at Doors (703.4.2)

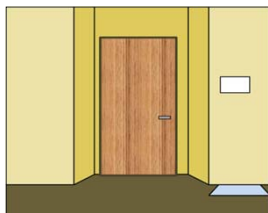


54

Location (703.4.2):

- placement at doors
- push side exception for doors with closer and no hold open devices

Sign Placement at Doors (703.4.2)



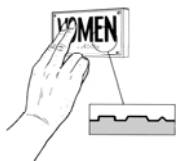
No space on latch side:
on nearest adjacent
wall



At double doors:
right side (2 active
leafs) or on inactive
leaf

55

216.2 Designations - Exterior Signs Identifying Permanent Rooms or Spaces



EXCEPTION: Exterior signs that are not located at the door to the space they serve shall not be required to comply with 703.2 (raised characters and braille).

56

216.3 Directional and Informational Signs - Exterior



Only signs that provide direction to or information about interior spaces and facilities must comply (216.3 & F216.3)

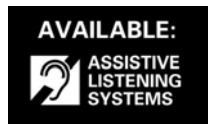
57

Assistive Listening Systems

58

Where Required (219.2)

- In each assembly area where audible communication is integral to the use of the space
- Exception where no audio amplification exception
- courtrooms do not get exception



NOT triggered by fixed seating or occupant load - 1991 Standards

59

Where Required (219.2)



audible communication = integral to use of the space and has audio amplification

60

Receivers (219.3)

Table 219.3 Receivers for Assistive Listening Systems

Capacity of Seating in Assembly Area	Minimum Number of Required Receivers	Minimum Number of Required Receivers Required to be Hearing-aid Compatible
50 or less	2	2
51 to 200	2, plus 1 per 25 seats over 50 seats ¹	2
201 to 500	2, plus 1 per 25 seats over 50 seats ¹	1 per 4 receivers ¹
501 to 1000	20, plus 1 per 33 seats over 500 seats ¹	1 per 4 receivers ¹
1001 to 2000	35, plus 1 per 50 seats over 1000 seats ¹	1 per 4 receivers ¹
2001 and over	55 plus 1 per 100 seats over 2000 seats ¹	1 per 4 receivers ¹

¹ Or fraction thereof.

61

Residential/ Transient lodging

62

Communication Features in Federally Funded Dwelling Units

HUD

- Except for DoD, ABA covered housing must comply with HUD ABA Standard (UFAS)
- HUD funded and assisted housing must comply with HUD's § 504 regulations

Other agencies

- Comply with agency § 504 regulations

63

Communication Features in Federally Funded Dwelling Units

UFAS requirements

- § 4.34.2 (10) audible and visual smoke alarms within dwelling units
- § 4.1.2 (13) and 4.28.2 audible and visible emergency alarms in public and common use spaces (typically hardwired and supervised)

64

Communication Features in Federally Funded Dwelling Units

HUD § 504 regulations

- Scoping for new construction (24 CFR 8.22 and 8.32)
- 5% units with mobility features
- 2% units with communication features (hearing and vision)

65

ADA Dwelling Unit Communications Features (Upcoming for ABA)

- Audible and visible building fire alarm systems and smoke alarms
- Peephole in unit entry door
- Audible and visible doorbell
- TTY interface to support visitor notification systems at site, building, or floor entrance

66

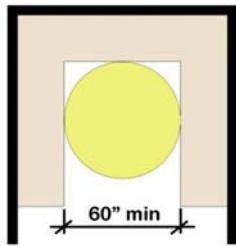
ADA Transient Lodging vs Residential Dwelling Unit

Transient lodging – typically 30 days or less with no right to return to the same unit

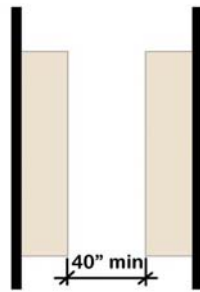
Residential dwelling unit – intended to be used as a residence, primarily long-term in nature, including social service facilities and certain housing at places of education

67

Kitchen Plan Types



U-Shaped Kitchens



Pass Through Kitchens

68

Architectural Barriers Act (ABA) Compliance

69

Complaint process

Complaints under the Architectural Barriers Act (ABA) can be filed with the Access Board online, by email, mail, or fax.

To get an investigation started, the Access Board needs:

- the name and address of the building or facility; and
- a brief description of each access problem or barrier you encountered at that building or facility.

Link to online complaint form -

http://cts.access-board.gov/formsiq/form.do?formset_id=2&ds=fdd&rel_oad=true

70

Other

71

Coverage of a Doctor's Office

ABA

- Designed, constructed, altered, or leased with Federal money if the funding agency is authorized to establish standards

Section 504

- Federally assisted or conducted
- Comply with applicable agency regulations

ADA title II

- Constructed by, on behalf of, or for the use of a state or local government entity
- Program of a state or local government entity

ADA title III

- Public accommodation or commercial facility

72

Historic Preservation

73

Alterations to Qualified Historic Buildings and Facilities (202.5)


EXCEPTION:

State Historic Preservation Officer or Advisory Council on Historic Preservation determines if compliance would threaten or destroy the historic significance of the building or facility and if the exceptions are permitted

- accessible routes (206.2.1 Exception 1 and 206.2.3 Exception 7)
- entrances (206.4 Exception 2)
- toilet facilities (213.2 Exception 2)

74

ADA Regulations



If not feasible to provide physical access to an historic property in a manner that will not threaten or destroy the historic significance of the building or the facility, alternative methods may be used

75

Section 508


Rulemaking Update

NEXT STEP: Notice of Proposed Rulemaking (NPRM)

- Review by OMB (February 2014) – 90 days
- Publish NPRM in the Federal Register
 - Public comment period – 60 days
 - Analyze comments
- Develop final rule & regulatory assessment
- Publish Final Rule in the Federal Register

Images as Labels

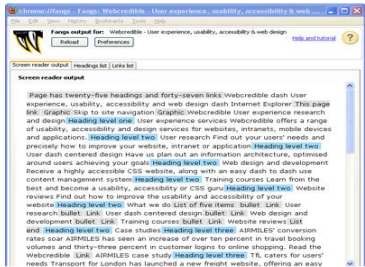
```
<label for="search"> <img alt="Search the site" source="lens.gif"> </label>
<input id="search" type="text">
</input>
```



- Example includes appropriate alt text associated with the image.
- Example: Use of a magnifying glass for the “submit” button of a search function.

Access for Screen Readers

- How a screen reader reads a page, identifying structural elements: headers, links



Screen reader characteristics

"alt="" is an acceptable method to make decorative images silent to a screen reader.

Image:



- ``
- Do not use `display="none"` in this example because that would hide the image from all users.

Website Testing - CSS



Cascading Style Sheets

- CSS attributes “display=none” hides content from all users, not just screen reader users.
- Using “display=none” for the top row of table would make that row invisible and silent for screen reader users.
 - CSS is very powerful and used widely on the web
 - CSS is now well supported by assistive technology
 - www.webaim.org/techniques/css

82

Full Text Links vs. Embedding

- Assistive technology will expose the HREF and title attributes for hyperlinks, the text that is exposed when one hovers the mouse cursor on a hyper link.
- Full text only helpful when the URL is entered manually
- Full URL helps everyone!

83

PDF Accessibility

- Accessibility requirements focus on the end product (e.g., a PDF or .doc file) and not the tool used to create the end product.
- Authoring techniques, such as those provided by Adobe for InDesign, focus on the software being used, and are therefore more specific and apply earlier in the workflow process.

84

Touch Screens

- **Must have:**
 - Tactilely discernible controls keys
 - Operable with one hand, no grasping, pinching or twisting wrist
 - If there is a key repeat, the key repeat rate shall be adjustable seconds per character
 - Status of locking or toggle controls or keys is discernible through touch or sound
- Non-tactile controls - question in 2011 ANPRM



Section 508 - 1194.23(k)(1)-(4)
1194.25(c) and 1194.26(a)

85

Questions?

You may type and submit questions in the
Chat Area Text Box or press Control-M
and enter text in the
Chat Area

86



U.S. Access Board

(800) 872-2253 (voice)
(800) 993-2822 (TTY)

E-mail: ta@access-board.gov
508@access-board.gov

www.access-board.gov

87

**Thank you for participating
in today's webinar**



Next session:

April 3, 2014

2:30 - 4:00 (ET)

"Trusted Tester Program" – Section 508

www.accessibilityonline.org

(877) 232-1990 (v/TTY)

88
